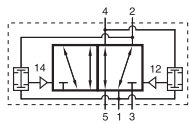
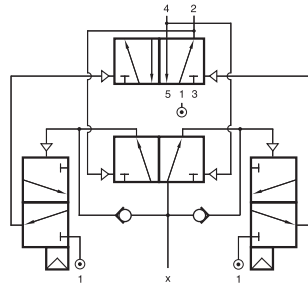


# PFF 520 701/PFFR 520 701



PFF 520 701



PFFR 520 701



Valves to generate oscillating movements for devices where continuous cycling is required, e.g. shaking, hammering, scraping, wiping, dipping etc.

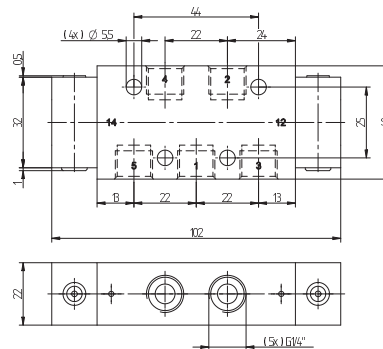
### Oscillating valve type PFF 520 701:

When compressed air is applied to port 1, the outlet ports 2 and 4 are alternately supplied with compressed air. The valve always moves the position as soon as the cylinder has reached the end position and a back pressure is applied to the valve.

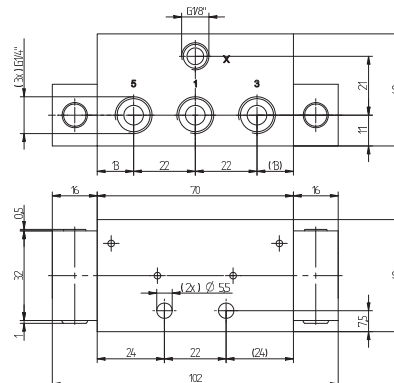
### Flip-Flop valve type PFFR 520 701:

The PFFR is a bistable 5/2-way valve, which is operated by only one pilot port. When a signal is applied to pilot port X, the valve is switching the position. It will remain in this position even if the signal is taken away. When the pilot signal is applied to port X again, the valve will switch the position again.

The speed of the operated cylinder and thus the frequency can be adjusted by adding flow regulators to the exhaust ports 3 and 5 of the valve. Please ask for SVE-1/4.



PFF 520 701



PFFR 520 701



SVE-1/4

Type	Port size	Air flow	Operating press.	Weight
PFF 520 701	G 1/4"	1250 l/min	2 - 10 bar	0,22 kg
PFFR 520 701	G 1/4"	1250 l/min	2 - 10 bar	0,40 kg