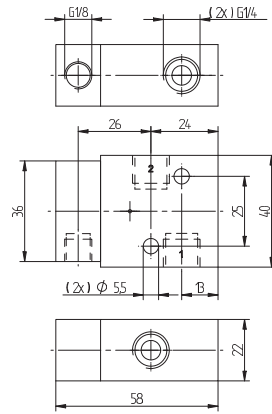
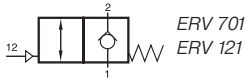
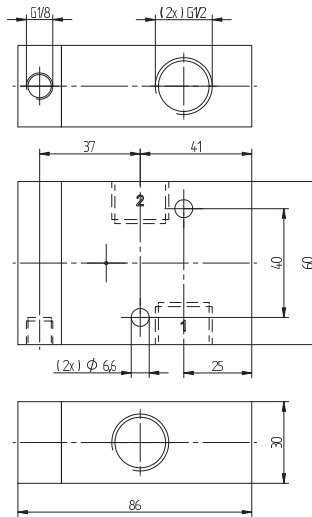


# ERV 701/ERV 121



**ERV 701**



**ERV 121**

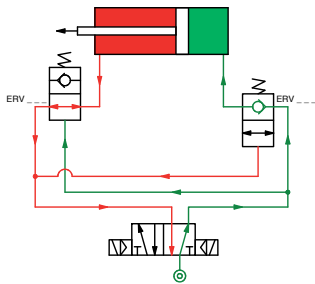
Pilot operated non-return valve.

Port 1 is blocked in basic position, but port 2 can exhaust through port 1.

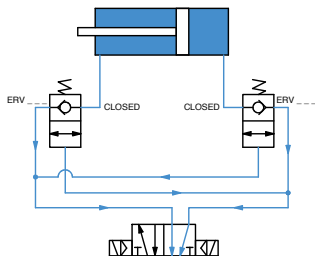
When a pilot signal is applied to port 12, the valve opens from 1 to 2.

Valve can be used to lock the air in a cylinder in case of loss of air pressure.

Cylinder in movement:



Pressure loss:



Type	Port size 1 and 2	Port size 12	Air flow	Operating press.	Weight
ERV 701	G 1/4"	G 1/8"	1250 l/min	1 - 10 bar	0,14 kg
ERV 121	G 1/2"	G 1/8"	3000 l/min	1 - 10 bar	0,45 kg

