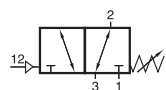
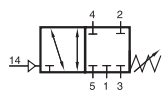


P 311 501 SR/P 411 701 SR

P 411 701 SR NPT



P 311 501 SR



P 411 701 SR
P 411 701 SR NPT



P 311 501 SR pneumatically actuated 3/2-way valve with mechanical spring return.
Valve can be used normally closed (pressure at port 1) and normally open (pressure at port 3).
Can also be used as 2/2-way valve.
Unused port to be closed with a silencer or plug.

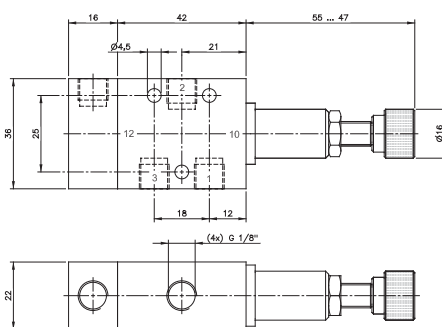
P 411 701 SR pneumatically actuated 4/2-way valve with mechanical spring return.
Valve either blocks all ports or is open from 1 to 4 and from 3 to 2.
Port 5 is a vent port and should have a silencer installed, do not plug.

Valve can be used as an **adjustable pneumatic pressure switch**. By turning the hand-wheel the required minimum actuation pressure can be set. Adjustment is not independent from operation pressure.

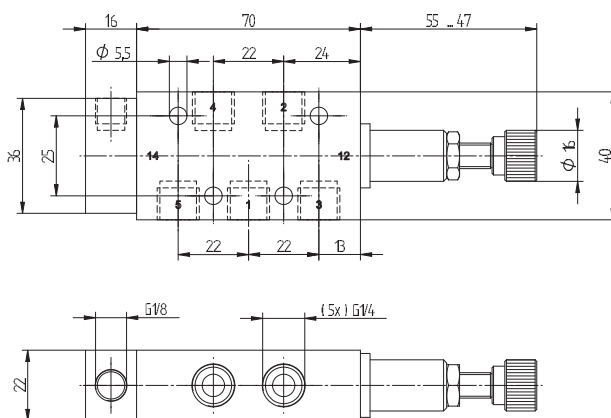
Switch-on pressure differs from switch-off pressure due to a hysteresis of around 1.5 bar.

The hysteresis is the difference between the pressure point when the valve is opening (e.g. 5 bar) and closing (e.g. 3.5). The 1.5 bar hysteresis is just a reference point as it is depending on the friction force.

The proportion between the friction force and the force of the air is changing when the air pressure increases. Therefore the hysteresis is getting smaller when the set actuating pressure increases.



P 311 501 SR



P 411 701 SR/P 411 701 SR NPT

Type	Port size	Air flow	Operating press.	Regulating range act. press.	Max. act. press.	Weight
P 311 501 SR	G 1/8"	650 l/min	1 - 10 bar	3 - 6 bar	10 bar	0,16 kg
P 311 501 SR 02	G 1/8"	650 l/min	1 - 10 bar	5 - 8 bar	10 bar	0,16 kg
P 311 501 SR 03	G 1/8"	650 l/min	1 - 10 bar	2 - 4 bar	10 bar	0,16 kg
P 411 701 SR	G 1/4"	1250 l/min	1 - 10 bar	3 - 6 bar	10 bar	0,21 kg
P 411 701 SR NPT	1/4" NPT	1250 l/min	1 - 10 bar	3 - 6 bar	10 bar	0,21 kg