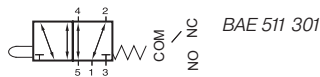
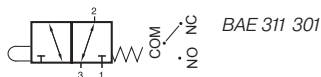


# BAE 311 301/BAE 511 301



The BAE 311 301 is a 3/2-way spool valve with mechanical spring for panel mounting that can either be used normally closed (pressure at port 1) or normally open (pressure at port 3).

The BAE 511 301 is a 5/2-way spool valve with mechanical spring for panel mounting.

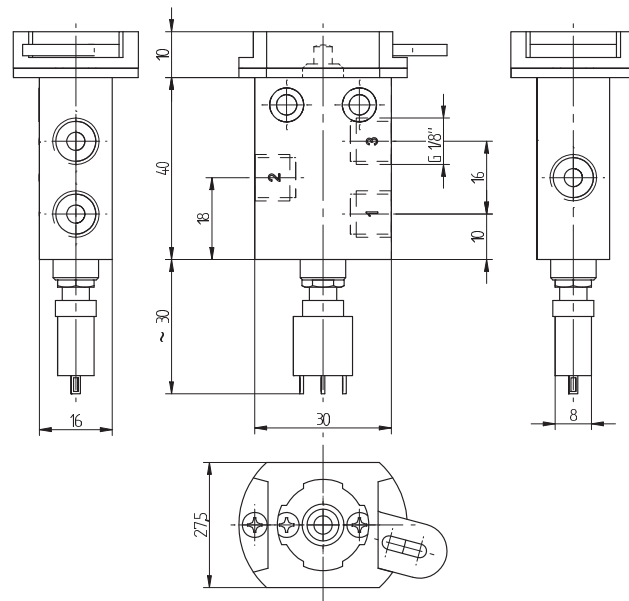
The valves include an electric switch that is actuated at the same time.

The electrical switch can be used up to 6 A /125 VAC. Switch can be connected in two ways either normally open or normally closed.

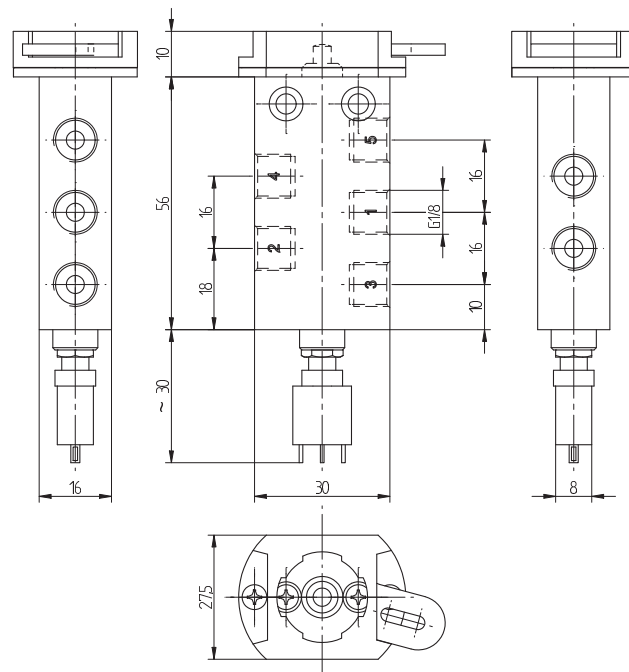
The electrical switch can also be combined with BA 311 201 and BA 511 201 on demand.

Actuation elements are displayed on page 2.2.1.

Please order including actuation element.



**BAE 311 301**



**BAE 511 301**

Type	Port size	Air flow	Operating press.	Actuating force	Weight
BAE 311 301	G 1/8"	280 l/min	-0,9 - 10 bar	17 N	0,08 kg
BAE 511 301	G 1/8"	280 l/min	-0,9 - 10 bar	17 N	0,097 kg