

# BAS-Series: Ø 30 mm Actuators for Panel Mounting

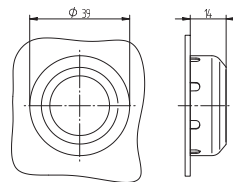
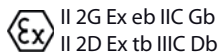


**BAS-Series:** Actuating elements for 30 mm panel mounting hole. Ideal for demanding applications.

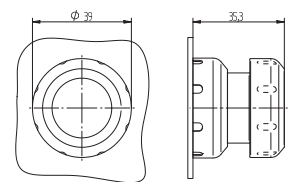
Actuators can be used with valves type BAS ... displayed on page 2.2.5. and 2.12.2.1.

- Materials: Polyamide, seals silicon
- Temperature range: -60°C ... +70°C  
(consider temperature limitations of the valve)
- IP protection: IP 66

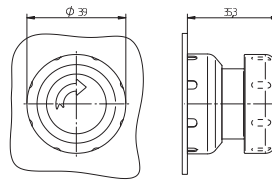
Elements are ATEX as well as IECEx approved and can be used in explosion hazardous environment zone 1, 2, 21 and 22.



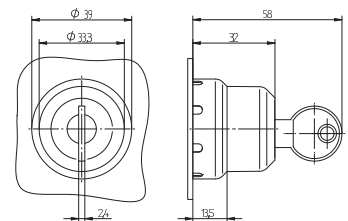
**BA 301 01 Ex**



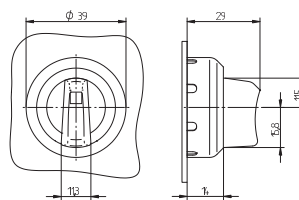
**BA 302 02 Ex**







**BA 303 02 Ex**



**BA 305 00 Ex**



**BA 307 01 Ex**

Type	Actuation	Colour	Actuating force	Weight
BA 301 01 Ex	Push button	black	8.5 N	0,034 kg 
BA 302 02 Ex	Palm button	red / yellow	8.5 N	0,05 kg 
BA 303 02 Ex	Palm button with detend	red / yellow	52 N	0,05 kg 
BA 305 00 Ex	Locking switch	black	1 N	0,05 kg 
BA 307 01 Ex	Rotary lever	black	1 N	0,04 kg 