

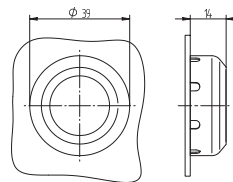
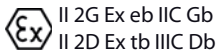
BAS-Series: Ø 30 mm Actuators for Panel Mounting



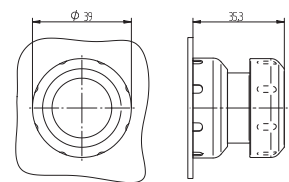
BAS-Series: Actuating elements for 30 mm panel mounting hole. Ideal for demanding applications. Actuators can be used with valves type BAS ... displayed on page 2.2.5. and 2.12.2.1.

- Materials: Polyamide, seals silicon
- Temperature range: -60°C ... +70°C (consider temperature limitations of the valve)
- IP protection: IP 66

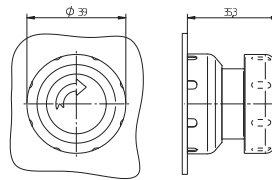
Elements are ATEX as well as IECEx approved and can be used in explosion hazardous environment zone 1, 2, 21 and 22.



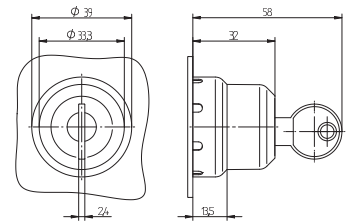
BA 301 01 Ex



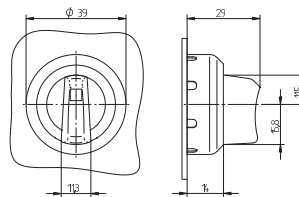
BA 302 02 Ex



BA 303 02 Ex



BA 305 00 Ex



BA 307 01 Ex

Type	Actuation	Colour	Actuating force	Weight
BA 301 01 Ex	Push button	black	8.5 N	0,034 kg
BA 302 02 Ex	Palm button	red / yellow	8.5 N	0,05 kg
BA 303 02 Ex	Palm button with detend	red / yellow	52 N	0,05 kg
BA 305 00 Ex	Locking switch	black	1 N	0,05 kg
BA 307 01 Ex	Rotary lever	black	1 N	0,04 kg