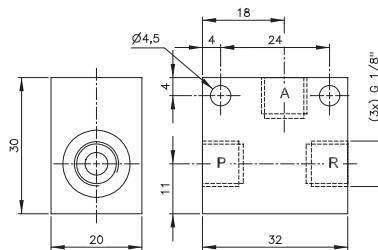
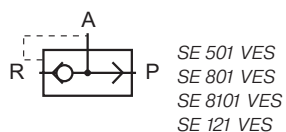


# SE 501 VES/SE 801 VES SE 8101 VES/SE 121 VES



**SE 501 VES**

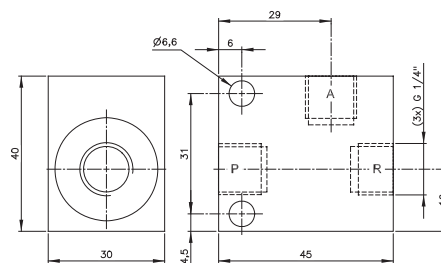
Quick-exhaust valve which can also be used as non-return valve as well as or-gate.

Body parts made from stainless steel 316L / 1.4404, rubber parts from NBR.

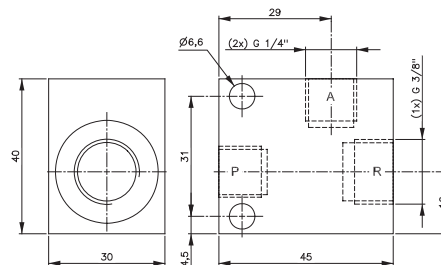
If used as a non-return valve please plug port R.  
Open from P to A, closed from A to P.

If used as an or-gate connect pressure to P and R.  
Port A is outlet.

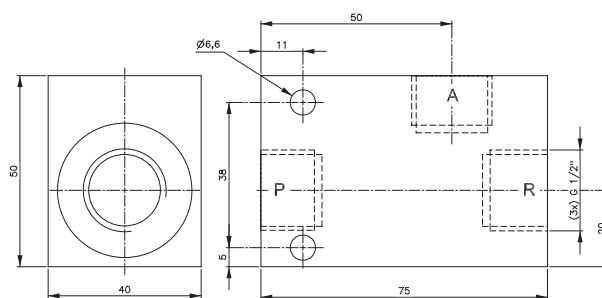
Temperature range: -20° C to +80° C



**SE 801 VES**



**SE 8101 VES**



**SE 121 VES**

Type	Port size A + P	Port size R	Air flow from A to R	Operating press.	Weight
SE 501 VES	G 1/8"	G 1/8"	564 l/min	0,3 - 10 bar	0,12 kg ❄️
SE 801 VES	G 1/4"	G 1/4"	1188 l/min	0,2 - 10 bar	0,42 kg ❄️
SE 8101 VES	G 1/4"	G 3/8"	1188 l/min	0,2 - 10 bar	0,41 kg ❄️
SE 121 VES	G 1/2"	G 1/2"	3600 l/min	0,5 - 10 bar	0,84 kg ❄️