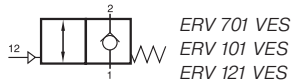


ERV 701 VES/ERV 101 VES/ERV 121 VES



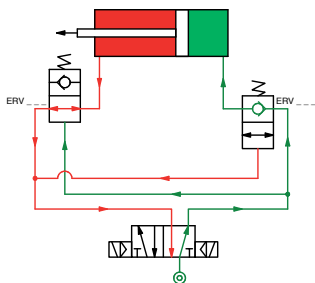
Pilot operated non-return valve.

Port 1 is blocked in basic position, but port 2 can exhaust through port 1.

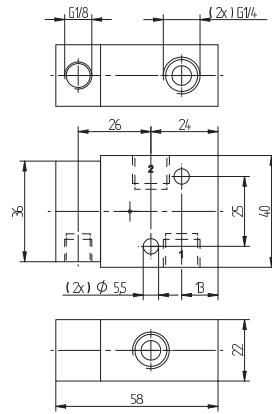
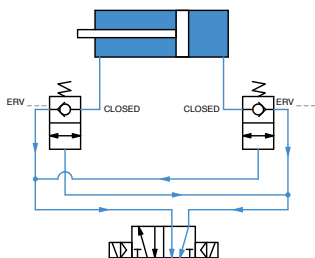
When a pilot signal is applied to port 12, the valve opens from 1 to 2.

Valve can be used to lock the air in a cylinder in case of loss of air pressure.

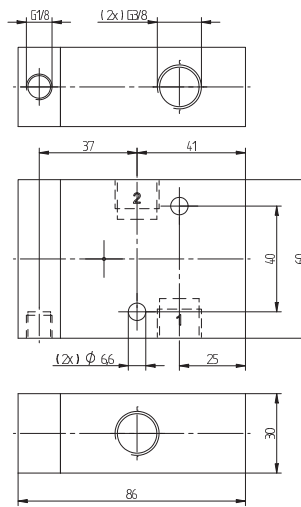
Cylinder in movement:



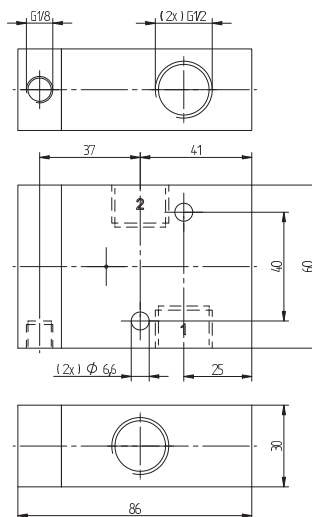
Pressure loss:



ERV 701 VES



ERV 101 VES



ERV 121 VES

| Type | Port size 1 and 2 | Port size 12 | Air flow | Operating press. | Weight |
|-------------|-------------------|--------------|------------|------------------|---------|
| ERV 701 VES | G 1/4" | G 1/8" | 1250 l/min | 1 - 10 bar | 0,33 kg |
| ERV 101 VES | G 3/8" | G 1/8" | 2250 l/min | 1 - 10 bar | 0,90 kg |
| ERV 121 VES | G 1/2" | G 1/8" | 3000 l/min | 1 - 10 bar | 1,20 kg |