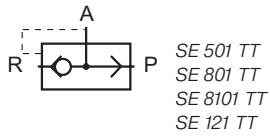


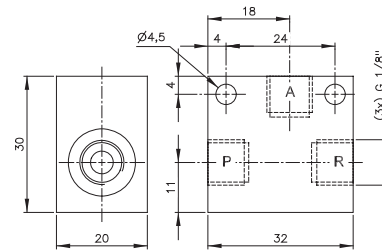
SE 501 TT/SE 801 TT/SE 8101 TT/SE 121 TT



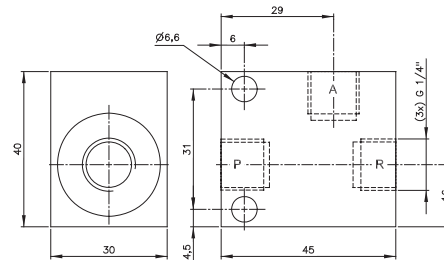
Quick-exhaust valve which can also be used as non-return valve as well as or-gate. For low temperature environment - 40° C to + 80° C.

If used as a non-return valve please plug port R.
Open from P to A, closed from A to P.

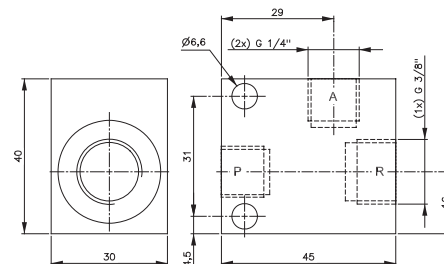
If used as an or-gate connect pressure to P and R.
Port A is outlet.



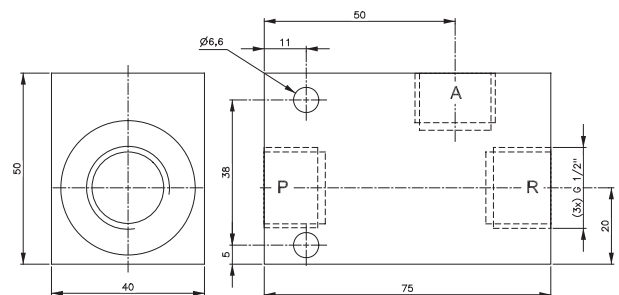
SE 501 TT



SE 801 TT



SE 8101 TT



SE 121 TT

Type	Port size A + P	Port size R	Air flow from A to R	Operating press.	Weight
SE 501 TT	G 1/8"	G 1/8"	564 l/min	0,3 - 10 bar	0,06 kg
SE 801 TT	G 1/4"	G 1/4"	1188 l/min	0,2 - 10 bar	0,18 kg
SE 8101 TT	G 1/4"	G 3/8"	1188 l/min	0,2 - 10 bar	0,18 kg
SE 121 TT	G 1/2"	G 1/2"	3600 l/min	0,5 - 10 bar	0,26 kg