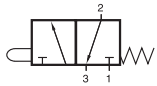
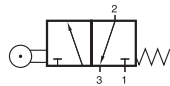


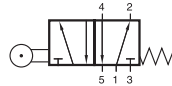
BG 311 701 TT/BR 311 701 TT/BR 511 701 TT



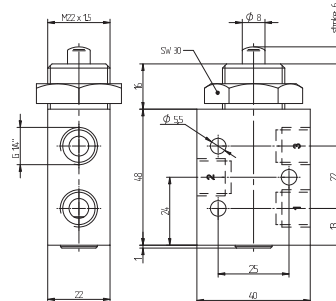
BG 311 701 TT



BR 311 701 TT



BR 511 701 TT



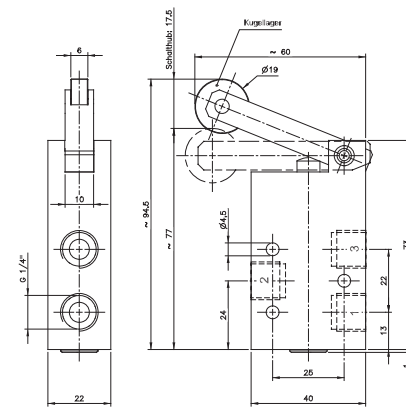
BG 311 701 TT

BG 311 701 TT heavy duty stem actuated 3/2-way spool valve with mechanical spring for low temperature environment -50° C to + 50° C. Suitable for wall or panel mounting. Nut for panel mounting M22 x 1,5 is included.

BR 311 701 TT / BR 511 701 TT heavy duty roller-lever spool valve with mechanical spring for low temperature environment -50° C to + 50° C. Lever-construction has proven capabilities in rough environmental applications for decades.

- BR 311 701 TT 3/2-way, spring return
- BR 511 701 TT 5/2-way, spring return

Due to the specific design of the low temperature seals pressure has to be applied to port 1.
For other versions (e.g. normally open) please get in touch with the manufacturer.



BR 311 701 TT

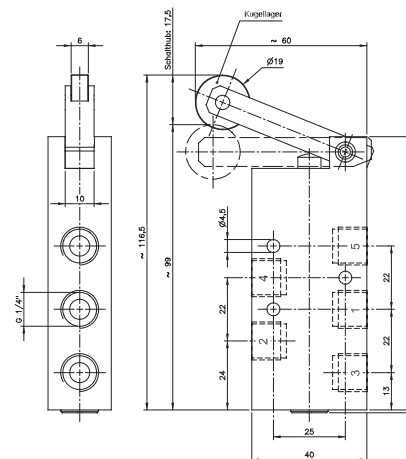
Please note:

When operated below 0° C the pressure condensation point has to be at least 15° C below the temperature of the environment and media.

Air has to be dried!

Below -40° C the leakage-rate of the valve can increase.
Further information on page 17. Use unlubricated air only.

Exhaust can be throttled.



BR 511 701 TT

Type	Function	Port size	Air flow	Operating press.	Actuating force	Weight
BG 311 701 TT	3/2-way spring ret.	G 1/4"	1250 l/min	1 - 10 bar	17 N	0,13 kg
BR 311 701 TT	3/2-way spring ret.	G 1/4"	1250 l/min	1 - 10 bar	3,5 N	0,20 kg
BR 511 701 TT	5/2-way spring ret.	G 1/4"	1250 l/min	1 - 10 bar	3,5 N	0,25 kg