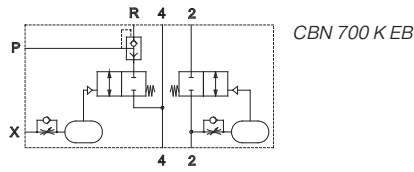
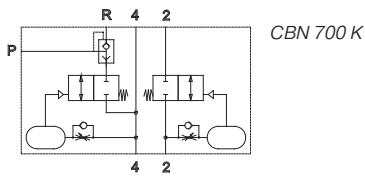


CBN 700 K/CBN 700 K EB

Controlblock for double acting actuators to control butterfly valves with inflatable valve-seat



Control block for double acting actuators with interface according to 1/4" NAMUR-standard, to be used on process-valves with inflatable valve seat.

The control-block receives it's signals to open and close from a standard 5/2-way NAMUR-valve.

The block is to be put between the actuator and the NAMUR-valve (flange-version).

The closing-signal is fed through to the actuator, the seal is inflated with time-delay.

When the process-valves is to be opened first the seal is deflated, with time-delay the actuator opens the process-valve.

Opening- and closing-time-delay can be adjusted independently but they are related to the operating pressure.

At 6 bar time-delay can be adjusted between 0 and 2 seconds.

Type **CBN 700 K EB** with additional port X: pressurizing of the inflatable seal does not start before a pneumatic signal is received.

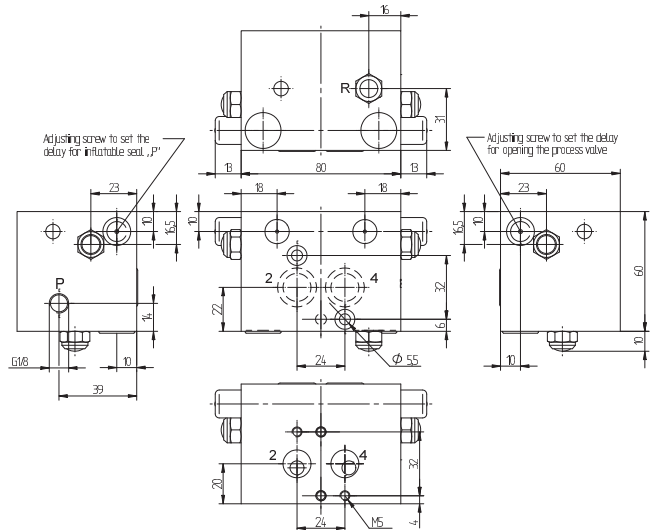
If the block is required with G 1/4" ports, plate GPN 1/4 can be added. For details please refer to page 2.11.13.

Delivery includes 2 screws, 2 O-rings, 2 protection caps.

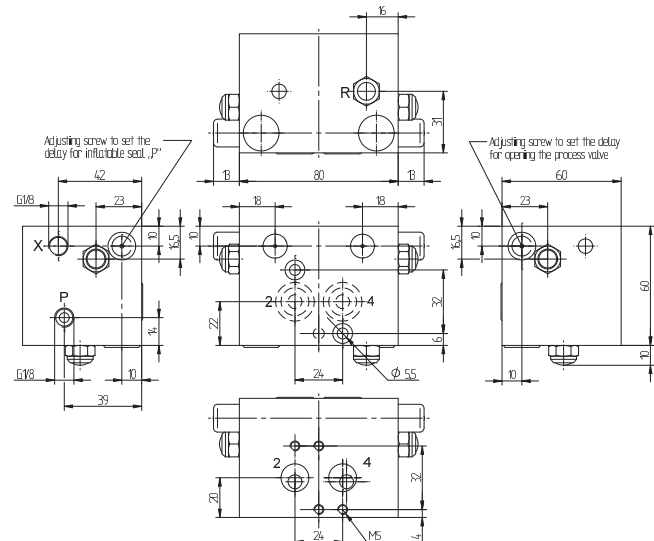
Please note:

If a pressure regulator is used between the CBN 700 (port P) and the inflatable seal, an additional quick exhaust valve is needed to exhaust the seal.

Temperature range: -25°C ... +50°C



CBN 700 K



CBN 700 K EB

| Type | NAMUR | Port P | Port X | Air flow act. | Operating press. | Air flow seal | Weight | |
|--------------|-------|--------|--------|---------------|------------------|---------------|---------|----|
| CBN 700 K | 1/4" | G 1/8" | | 900 l/min | 3 - 10 bar | 400 l/min | 0,80 kg | Ex |
| CBN 700 K EB | 1/4" | G 1/8" | G 1/8" | 900 l/min | 3 - 10 bar | 400 l/min | 0,80 kg | Ex |