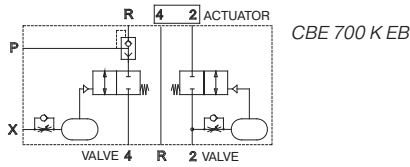
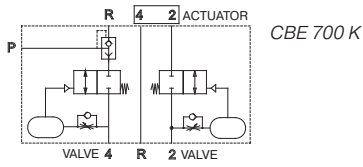


# CBE 700 K/CBE 700 K EB

Controlblock for single-acting actuators to control butterfly valves with inflatable valve-seat



Control block for single-acting actuators with interface according to 1/4" NAMUR-standard, to be used on process-valves with inflatable valve seat.

The control-block has to receive it's signals to open and close from a 5/2-way NAMUR-valve.  
Please note that it does not work with a 3/2-way valve.

The block can only be used for spring-close applications.  
Air is used to open the actuator; spring is closing it.  
The spring-chamber won't be pressurised during the closing movement.  
The block does not offer the exhaust-air recirculation (purge) of the spring-chamber.

The block also offers a fail-close function. If the electricity and/or air signal cuts-off the actuator will close by the force of the springs. However, in case the air is away the valve-seat won't be pressurised.

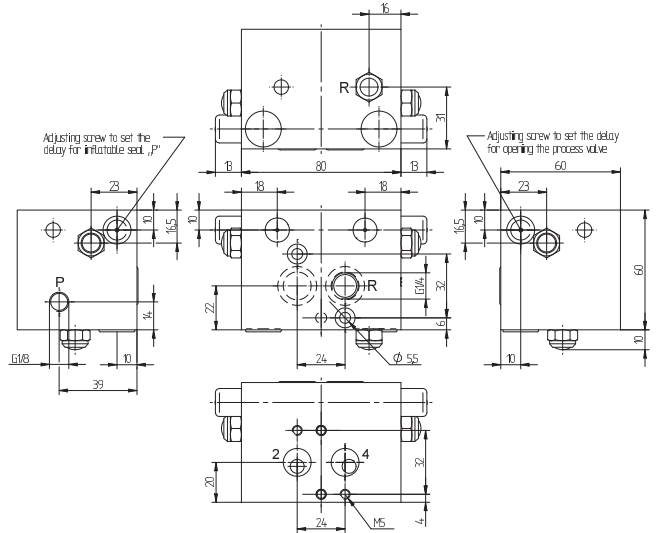
Opening- and closing-time-delay can be adjusted independently but they are related to the operating pressure.  
At 6 bar time-delay can be adjusted between 0 and 2 seconds.

Type **CBE 700 K EB** with additional port X: pressurizing of the inflatable seal does not start before a pneumatic signal is received.

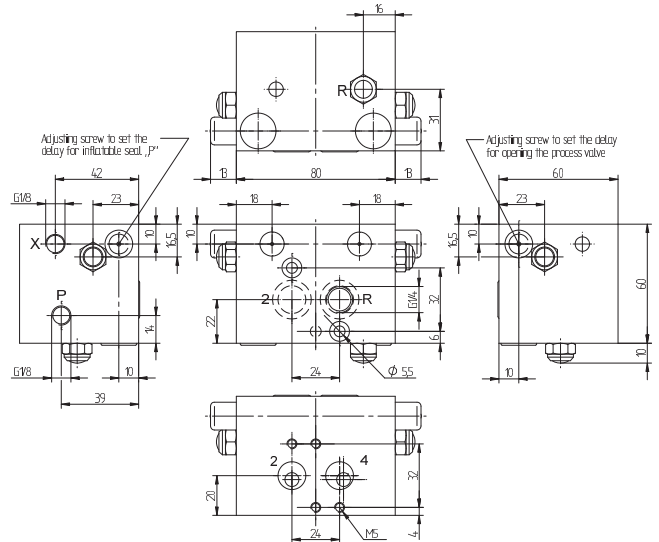
If the block is required with G 1/4" ports, plate GPN 1/4 can be added. For details please refer to page 2.11.13.  
Delivery includes 2 screws, 2 O-rings, 2 protection caps.

Please note:  
If a pressure regulator is used between the CBE 700 (port P) and the inflatable seal, an additional quick exhaust valve is needed to exhaust the seal.

Temperature range: -25°C ... +50°C



**CBE 700 K**



**CBE 700 K EB**

Type	N AMUR	Port P	Port X	Air flow act.	Operating press.	Air flow seal	Weight	
CBE 700 K	1/4"	G 1/8"		900 l/min	3 - 10 bar	400 l/min	0,80 kg	Ex
CBE 700 K EB	1/4"	G 1/8"	G 1/8"	900 l/min	3 - 10 bar	400 l/min	0,80 kg	Ex