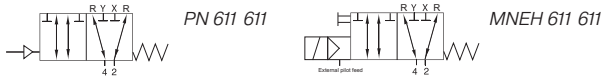


PN 611 611/MNEH 611 611

Pneumatically and electrically actuated block and vent valve



Valve blocks signals from pilot valve and exhausts the actuator. Intermediate valve for assemblage onto the actuator with 1/4" NAMUR-interface. It offers a 1/4" NAMUR-interface towards the pilot-valve (use as sandwich).

Function:

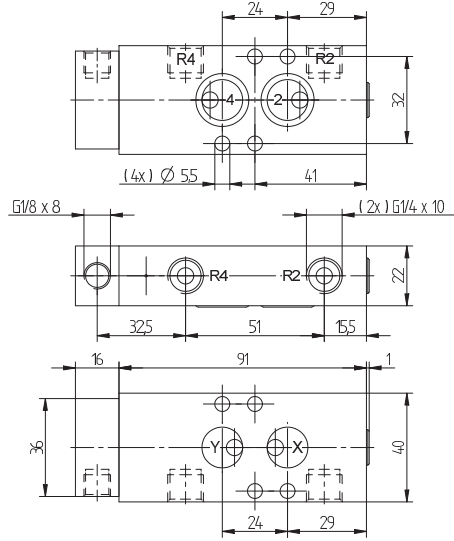
As long as the valve is actuated, it forwards the signals from the pilot valve which are applied to port X and Y through to 2 and 4. As soon as the actuating signal is taken away or cuts off ports X and Y will be blocked and ports 2 and 4 can exhaust through the R ports.

- PN 611 611 operated by air.
- MNEH 611 611 operated by solenoid and additional external pilot air supply. Equipped with manual override to turn.

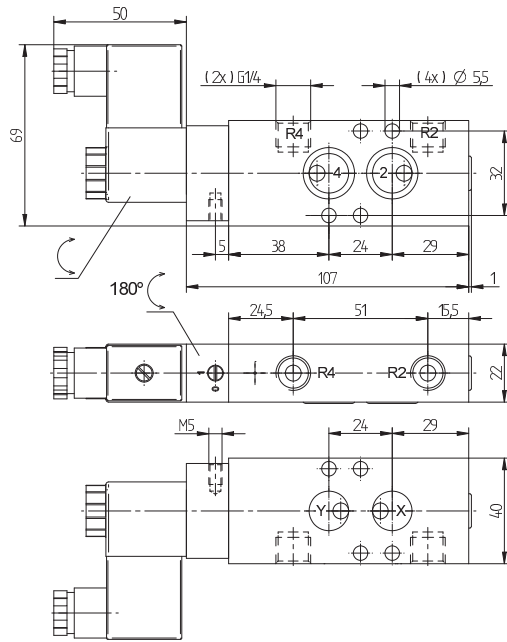
MNEH 611 611 available with solenoid operators: 230V/50Hz, 110V/Hz, 24V/50 Hz, 48V=, 24V=, 12V=.

If valve is required with G 1/4" ports, plate GPN 1/4 can be added. For details please refer to page 2.11.13.

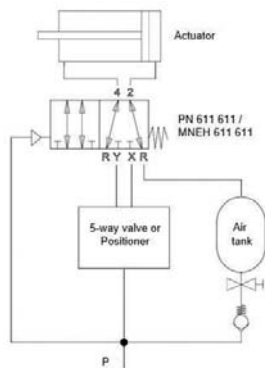
Delivery includes 1 pin, 2 screws, 2 O-rings.



PN 611 611



MNEH 611 611



Valves can be also used to realize a failsafe function on double acting actuators. For this purpose an external air tank can be connected to any of the two R ports like in the exemplary circuit below.

Type	Port size	Air flow	Operating press.	Actuation press.	Power cons.	Weight
PN 611 611	G 1/4" NAMUR	900 l/min	1 - 10 bar	3 - 10 bar		0,26 kg
MNEH 611 611	G 1/4" NAMUR	900 l/min	1 - 10 bar	3 - 10 bar (port 12)	3 W = / 5 VA ~	0,34 kg