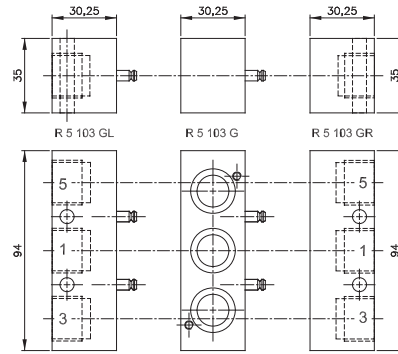


# RB 5 \_\_ 103 G



Parts of modular manifold RB 5 \_\_ 103 G

Modular manifold system for common connections to ports 1 (pressure), 3 and 5 (exhaust). The system can be build and taken apart just by operating two hexagon socket screws. Additional stations can be added at any position and any time. End-plates are equipped with threads for adding DIN-rail mounting clips.

The following valves can be assembled to the system

**RB 5 \_\_ 103 G:**

- 5/2 single solenoid G 3/8" MH 510 101 G page 2.5.2.1.3
- 5/2 double solenoid G 3/8" MH 520 101 G page 2.5.2.1.6
- 5/3 solenoid G 3/8" MH 53\_ 101 G page 2.5.3.1.3

Further technical details on the valves can be found on the pages mentioned above. Drawings of the "G-version" valves with the additional mounting holes for manifold mounting can be found on this page.

The system consists of:

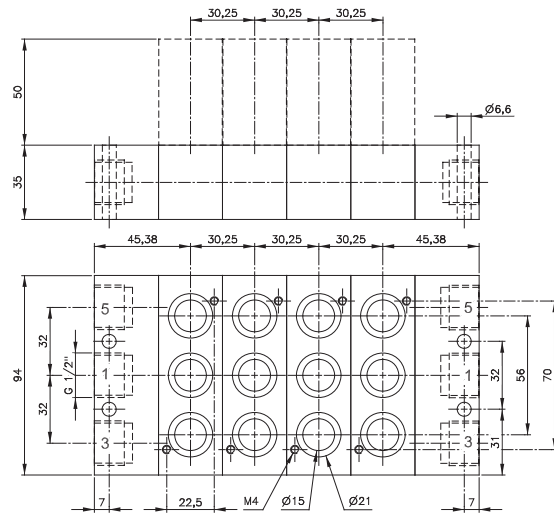
- End-plate right type R 5 103 GR
- End-plate left type R 5 103 GL
- Individual position type R 5 103 G

Blanking plates are also available type BP 5 103.

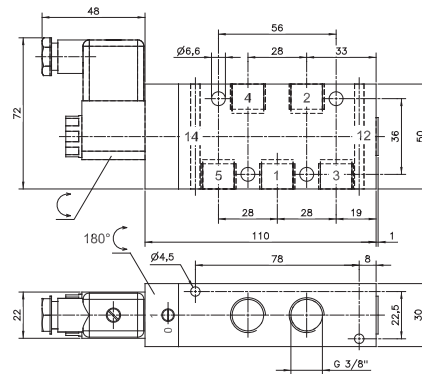
Please note:

End-plates are not offering an individual valve-position.

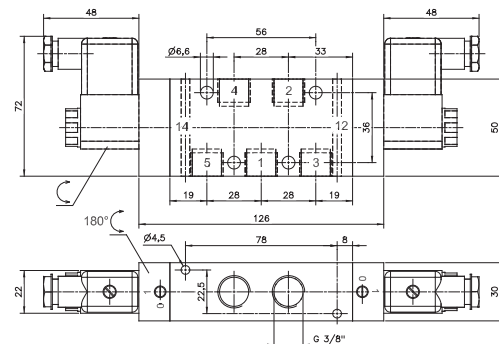
The plates can also be ordered assembled by the manufacturer. In this case order RB 5 \_\_ 103 G. Please add two digits for the number of positions required.



R 5 \_\_ 103 G Orifice size: 19 mm



MH 510 101 G



MH 520 101 G/MH 53\_ 101 G

Type	Function	Weight
R 5 103 GR	End-plate right	0,20 kg
R 5 103 GL	End-plate left	0,21 kg
R 5 103 G	Individual position	0,18 kg