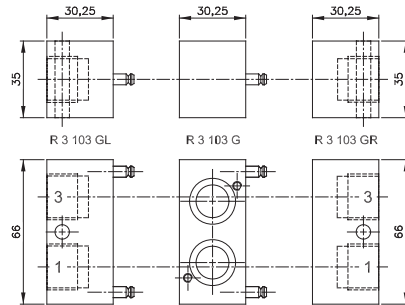


# RB 3\_\_ 103 G



Parts of modular manifold **RB 3\_\_ 103 G**

Series 103 G modular manifold system for common connections to ports 1 (pressure) and 3 (exhaust). The system can be build and taken apart just by operating two hexagon socket screws. Additional stations can be added at any position and any time. End-plates are equipped with threads for adding DIN-rail mounting clips.

The following valves can be assembled to the system  
**RB 3\_\_ 103 G:**

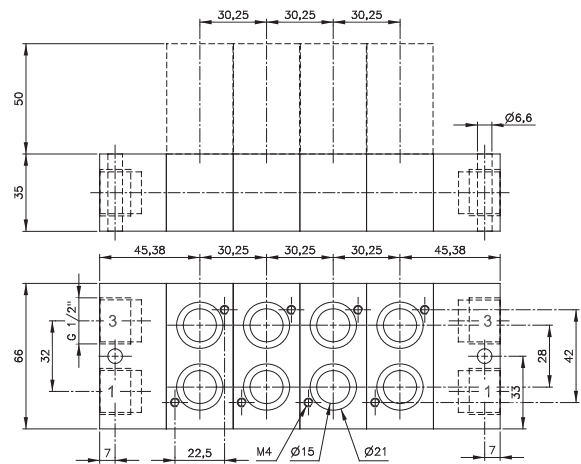
- 3/2 single sol. n.c.    G 3/8" MH 310 101 G    page 2.5.1.1.11
- 3/2 single sol. n.o.    G 3/8" MOH 310 101 G    page 2.5.1.1.11

Further technical details on the valves can be found on the pages mentioned above. Drawings of the "G-version" valves with the additional mounting holes for manifold mounting can be found on this page.

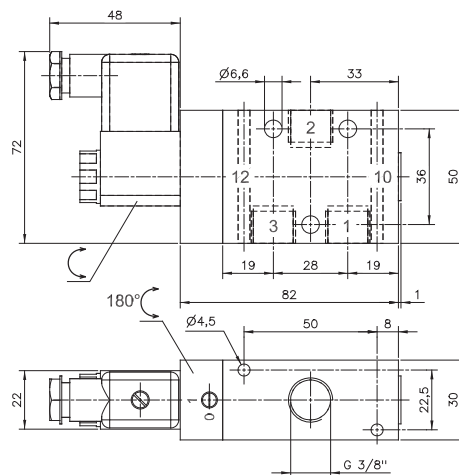
- The system consists of:
- End-plate right type R 3 103 GR
- End-plate left type R 3 103 GL
- Individual position type R 3 103 G

Blanking plates are also available type BP 3 103.

Please note:  
 End-plates of series 103 G are not offering an individual valve position. The plates can also be ordered assembled by the manufacturer. In this case order RB 3\_\_ 103 G (3/8"). Please add two digits for the number of positions required.



**RB 3\_\_ 103 G** Orifice size: 19 mm



**MH 310 101 G/MOH 310 101 G**

Type	Function	Weight
R 3 103 GR	End-plate right	0,14 kg
R 3 103 GL	End-plate left	0,15 kg
R 3 103 G	Individual position	0,12 kg