

R __



Common connection to port 1 (pressure).

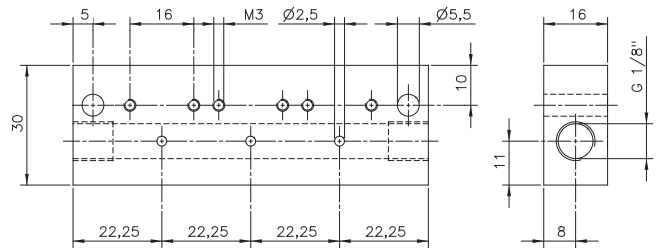
The following valves can be assembled to the manifold plate type **R __**:

- MH 312 port 2: M5
- MH 314 port 2: pif 4 mm
- MH 315 port 2: G 1/8"
- MH 316 port 2: pif 6 mm

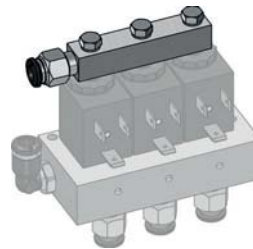
All the valves are displayed on page 2.5.1.2.1.

Blanking plates are also available type BP 3.

All the manifold plates offered by HAFNER-Pneumatik can be equipped with the DIN-rail mounting clips.



R __ Orifice size: 8,5 mm



Exhaust rail - RS 03

Available on request:

Exhaust rail to collect the exhausting air at the operator tube. Please ask for our type RS __ . Please add two digits for the number of positions required. Push-in fitting not included.

Stations	Type	Weight
2	R 02	0,08 kg
3	R 03	0,11 kg
4	R 04	0,13 kg
5	R 05	0,16 kg
6	R 06	0,19 kg
8	R 08	0,24 kg
10	R 10	0,30 kg
12	R 12	0,35 kg