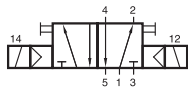


MH 510 704 J / MH 520 704 J



MH 510 704 J



MH 520 704 J



5-way solenoid valve with standardized interface which is widely used in packaging machines for bulk materials such as cement.

Type 510 5/2-way single solenoid, with air spring return
 Type 520 5/2-way double solenoid, actuated by impulse

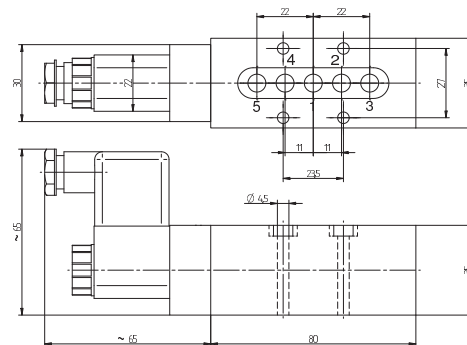
Available with solenoid operators:
 230V/50Hz, 110V/50Hz, 48V/50Hz, 24V/50 Hz, 24V=, 12V=.

Valves are generally equipped with manual override.

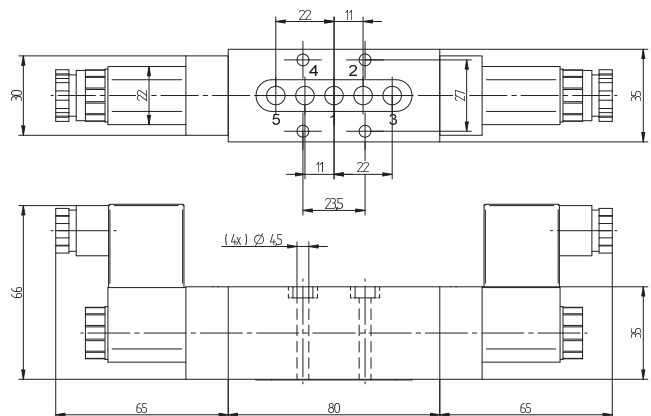
Mounting screws and seals are included.

Pneumatically actuated versions available on request.

Valves can be put onto the single base-plate type R 520 704 J which is displayed on the following page.



MH 510 704 J



MH 520 704 J

| Type | Function | Port size | Air flow | Operating press. | Power cons. | Weight |
|--------------|-------------------------|-----------|------------|------------------|----------------|---------|
| MH 510 704 J | 5/2-way single solenoid | Ø 7 mm | 1250 l/min | 1,5 - 10 bar | 3 W = / 5 VA ~ | 0,55 kg |
| MH 520 704 J | 5/2-way double solenoid | Ø 7 mm | 1250 l/min | 1,5 - 10 bar | 3 W = / 5 VA ~ | 0,68 kg |